

Standardized SEAL Programs



Social Information Processing Application (SIP-AP)

The Social Information Processing Application (SIP-AP) is an innovative, self-administered, web-based computer application that assesses 16 essential social information processing skills in 3rd-5th grade (8-12 year old) children. This tool is helpful for both clinicians and researchers. For clinicians, it may assist in identifying social cognitive deficits and in guiding interventions for children who are experiencing problems with aggression, inattention, conduct problems, or social skills. Researchers can take advantage of the automated data entry and on-demand options for downloading of data.



Child and Adolescent Recognition of Emotions (CARE)

The CARE assessment tool is a web-based computer application that assesses FACS-coded facial and nonverbal emotion recall and recognition skills as well as anger biases in four-to-six year old children. This instrument can be administered with minimal supervision. Expansion of the measure to include additional FACS-coded photographic stimuli of older age groups of children is planned.



Acknowledgements:

The development of the Social-Emotional Assessment and Learning (SEAL) Programs website was funded in part by Grant No. MH066445 from the National Institute of Mental Health. Its contents are solely the responsibility of the authors and do not necessarily represent the official views of the U.S. Department of Health and Human Services.

Visit the SEAL website for additional information:
www.sealprograms.com

IRT innovation Research & Training
 1415 W NC Highway 54
 Suite 121
 Durham, NC 27707



Social Emotional Assessment and Learning (SEAL) Programs:

Innovative, flexible web-based service for development and administration of social and emotional learning assessments of children and adolescents

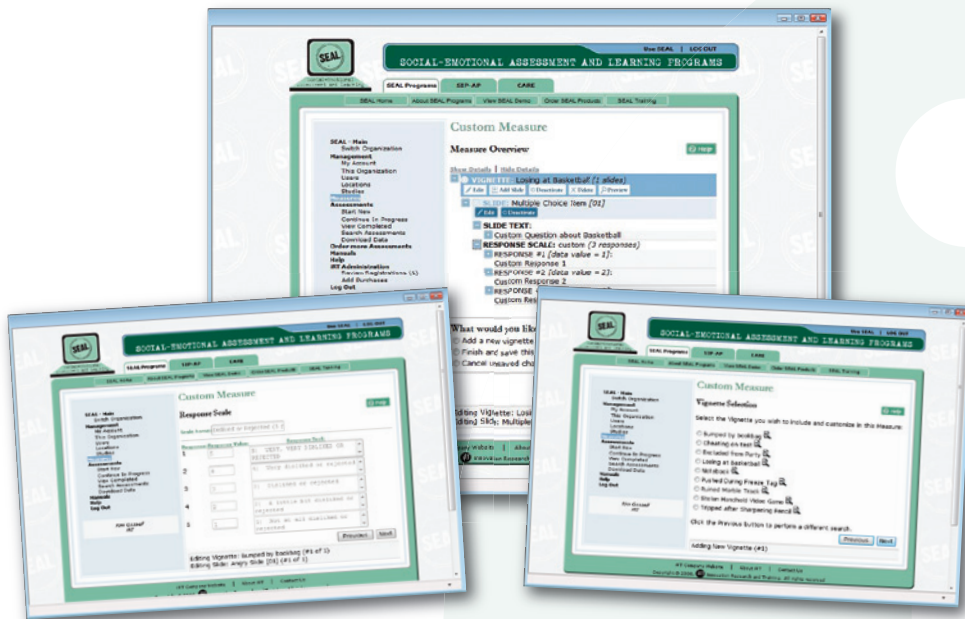
- Using innovative scientific methods in assessment, research and training.

SEAL Overview

The Social Emotional Assessment and Learning (SEAL) Programs website provides a single host for accessing measures and information about the assessment of social and emotional development in children and adolescents with the highlight of access to web-based administration. The goal of SEAL is to become the premier, state-of-the-art resource for social and emotion learning (SEL) assessments for schools, counselors, psychologists, social workers, and researchers.

SEAL provides an innovative web-based service for:

- on-demand usage, scoring, storage, and downloading of evidence-based SEL assessment tools; and
- flexible creation of customized assessment batteries for measuring social and emotional skills in children and adolescents.



Customizable Administration Features

Beyond offering an array of evidence-based assessment tools for social and emotional skills that can be adopted without modification, SEAL also allows users to have the ability to create fully customizable assessment tools and batteries. Users have a number of options available to them including:

- Psychometrically strong, standard SEAL Programs including the SIP-AP and CARE;
- Creation of custom items and response scales relevant to your own practice or research study;
- Control over order of presentation of stimuli and assessment items;
- Ability to integrate rich media into assessment items including video stimuli and audio narrations;
- Use of stock screen background images or ability to use custom background screens.

Research Features

SEAL is a particularly exciting web service for researchers in that it provides the following functionality:



- Real time, automatic, computerized data entry and storage on secured servers.
- Access to data from any location with internet access.
- Ability to include psychometrically strong, web-based SEL measures.
- Use of audio-computer-assisted self-administration which requires very little supervision of child respondents.
- Quick and easy online ordering options.
- Password protected access to administrative and respondent data.
- Ability to create multiple user accounts, multiple studies, and multiple locations.
- Web-based help menus are available throughout the administrative backend of the website to assist in creation of an assessment protocol and management of participant/client information.

Evidence Basis for Standard SEAL Programs

The Standard SEAL Programs including the SIP-AP and CARE are based on extensive research related to children's social and emotional skills including the Social Information Processing (SIP; Crick & Dodge, 1994) model of how children process information in social situations and the Affective Social Competence (ASC; Halberstadt et al., 2001) model, which captures the development of emotional understanding, communication, and experience within relationships.

Web-Based Training Overview

Course on SIP research and assessment is available through the SEAL Programs website.

Key components of the training:

- Examine the five cognitive mechanisms included in the Social Information Processing (SIP) conceptual framework
- Research on SIP skills deficits and their relation to children's behavior problems
- Description of the development of the Social Information Processing Application (SIP-AP)
- Summary of the research findings on the reliability and validity of the SIP-AP measure from a norming study
- Training in how to administer and interpret the SIP-AP

